

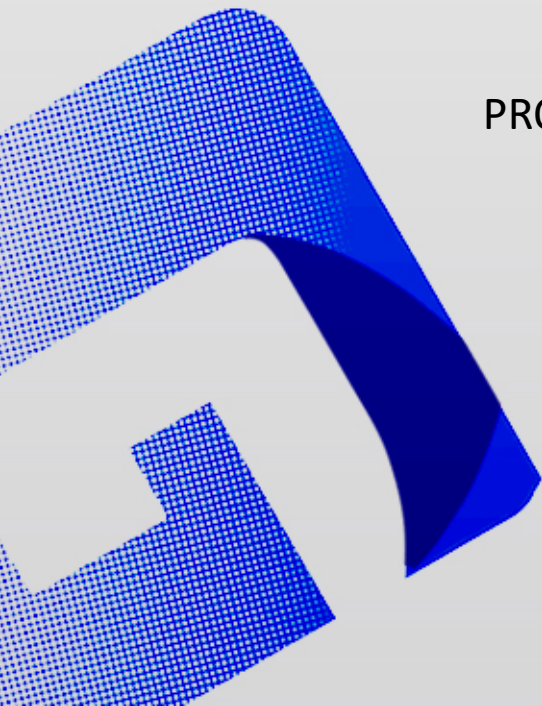


# TECHNICAL PROPOSAL

## GKS-6024T2

1500W-6000W

PROFESSIONAL TUBE LASER CUTTING MACHINE





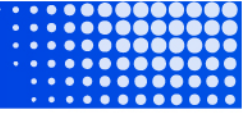
## ▶ PRODUCT OVERVIEW

- Professional tube fiber laser cutting machine—GKS-6024T2 is used for cutting square tube, rectangular tube, oval tube, waist type tube, hexagonal tube; square tube  $\Phi 20 * 20$ -  $\square 240 * 240$ mm, Round tube and square tube  $\Phi 20$ - $\Phi 240$ mm, H steel#10--#18 U-steel tube #5--#18 L-steel tube #4--#16 thickness of 0.5-10mm carbon steel tube, 0.5-10mm stainless steel tube.

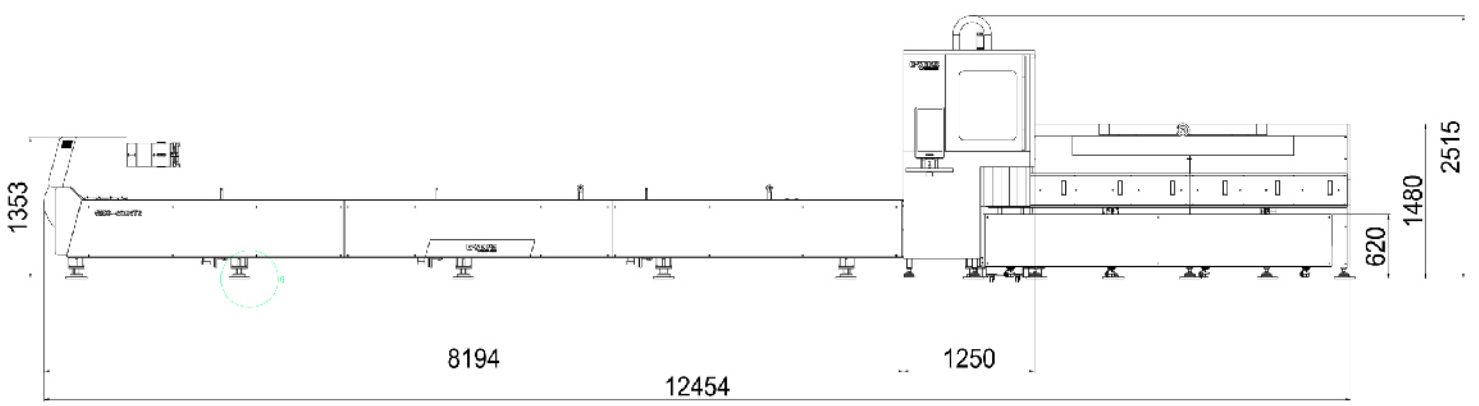
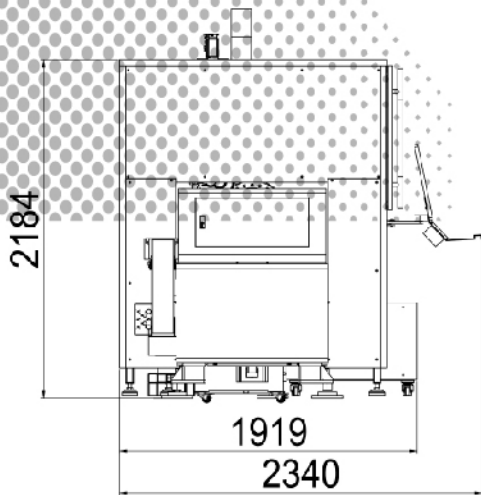
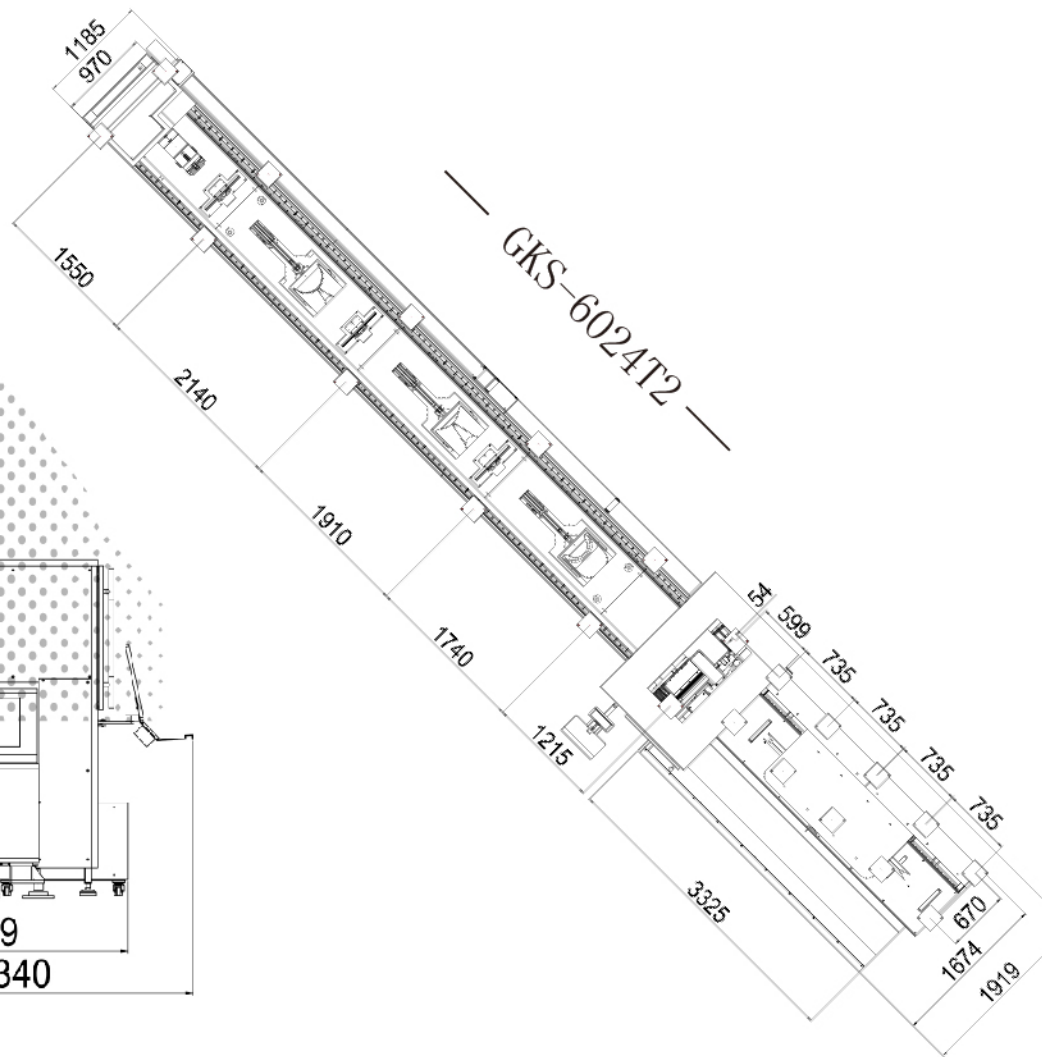
## ▼ ADVANTAGE

- Professional pipe cutting machine
- The newest pneumatic chuck
- Automatic loading and unloading can be upgraded





# ▶ PRODUCT DESCRIPTION





## TECHNICAL PARAMETERS

<b>Model</b>	<b>GKS-6024T2</b>
<b>Pipe diameter range (diameter of circumscribed circle)</b>	<b>Tube length: 6500mm Φ20-240mm, (Round tube) □20-240mm (Square tube) #10--#18 (H steel) #5--#18 (U-steel tube) #4--#16 (L-steel tube)</b>
<b>Maximum pipe length</b>	<b>6500mm</b>
<b>X-axis travel</b>	<b>500mm</b>
<b>Y-axis travel</b>	<b>6500mm</b>
<b>Z-axis travel</b>	<b>400mm</b>
<b>W-axis rotation angle</b>	<b>n*360</b>
<b>W axis maximum speed</b>	<b>100m/min</b>
<b>X / Y / axis positioning accuracy</b>	<b>±0.05mm</b>
<b>X / Y / axis repeat positioning accuracy</b>	<b>±0.03mm</b>
<b>X axis maximum moving speed</b>	<b>100m/min</b>
<b>Y axis maximum moving speed</b>	<b>100m/min</b>
<b>Chuck</b>	<b>Pneumatic</b>
<b>Maximum load of chuck</b>	<b>single tube weight ≤ 300KG, equipped with central square hole chuck</b>
<b>Guide rail width</b>	<b>35MM</b>
<b>Lubrication type</b>	<b>Automatic oiling</b>
<b>Power available</b>	<b>1500-6000W</b>
<b>Dimension</b>	<b>12455*2340*2500mm<sup>3</sup></b>
<b>Total Weight</b>	<b>5.7T</b>



### GKS-6024T2 Main Specification

No.	Name	Quantity	Brand
1	Laser source	1 set	Raycus/IPG
2	Laser head	1 set	Raytools auto focusing
3	Machine body	1 set	Gweike
4	Gear and Rack	1 set	TaiwanApex/YYC (Choose according to inventory)
5	Reducer	1 set	France Motovario
6	Dimensions	mm	12455*2340*2500mm <sup>3</sup>
7	Cutting length	mm	Φ20-240mm (Round tube) □20-240mm (Square tube) #10--#18 (H steel) #5--#18 (U-steel tube) #4--#16 (L-steel tube)
8	Exhaust Smoke System	1 set	China
9	Guide rail	1 set	Taiwan Lapping / Taiwan / Hiwin
10	Electronic Components	1 set	France Schneider
11	Pneumatic Components	1 set	Japan SMC/Taiwan AirTec
12	Control system	1 set	Cypcut 3000S/5000B
13	Water chiller	1 set	Hanli
14	Control cabinet	1 unit	Gweike
15	Auto lubrication	1 unit	China
16	Industrial computer	1 unit	HP

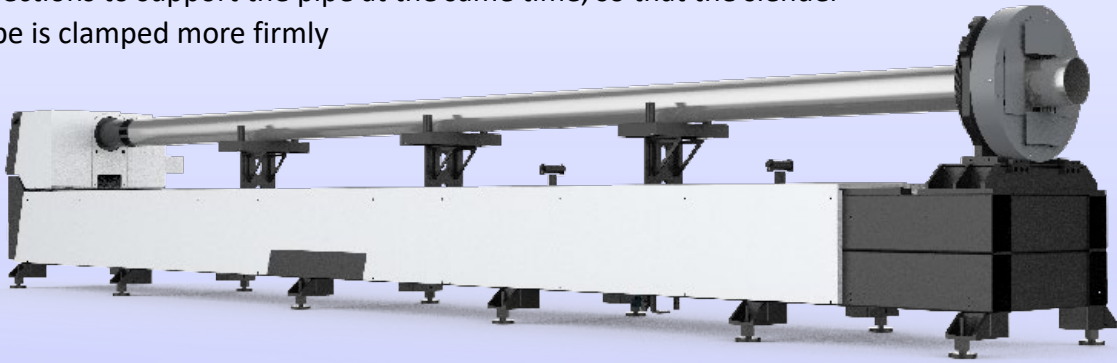
### Consumables

Name	Protective mirror	Nozzle	Geramic rings
Replacement Time	1-7 days on average	1-4 weeks on average	2-4 months on average

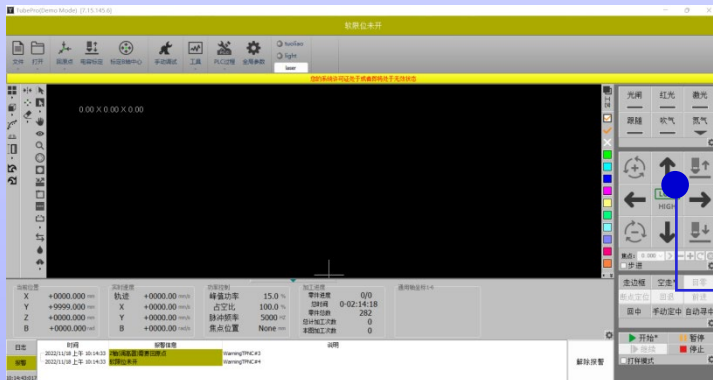
## ▶▶ OPTIONAL CONFIGURATION

### ▼ Servo Motor Follow-up Support + Fat-Plate Follow-up Unloading Rack

- The follow-up support module adopts up and down + left and right directions to support the pipe at the same time, so that the slender pipe is clamped more firmly

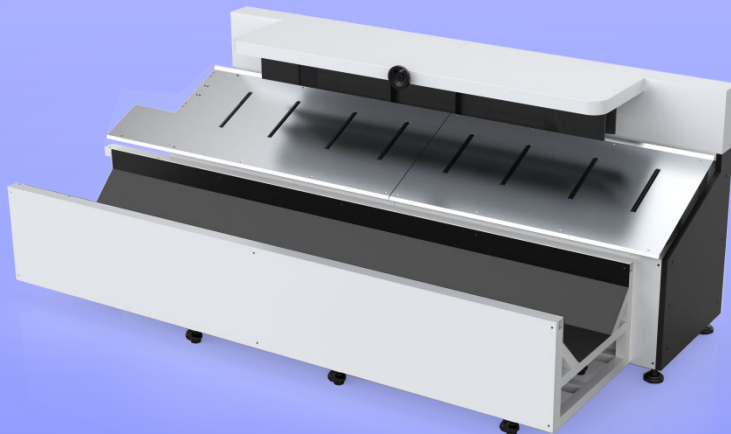


- Special bus control system for pipe cutting machine



Full bus closed-loop control, supporting functions such as bus follow-up, servo ejection, front chuck movement, etc.

- Follow-up Unloading Rack

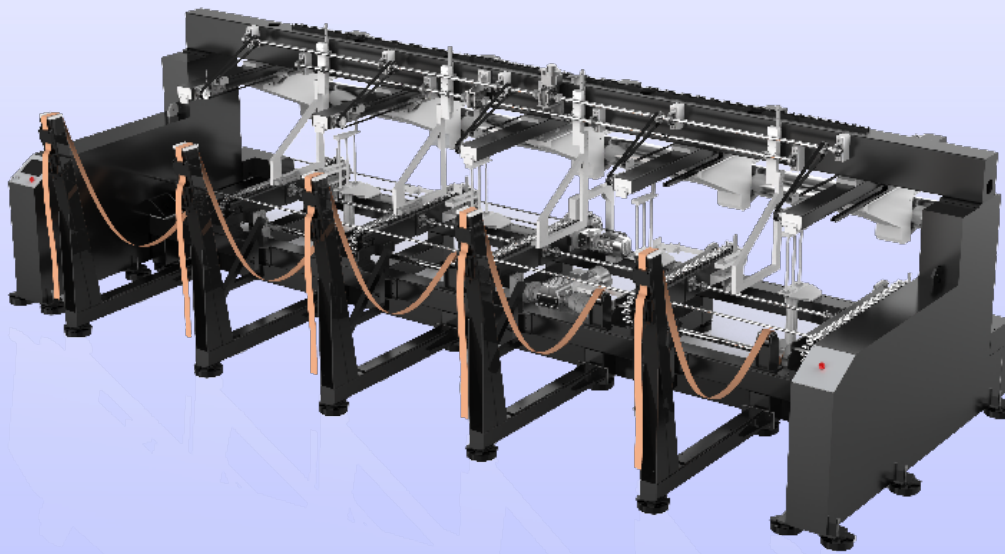




## ▶ OPTIONAL CONFIGURATION

### ▼ Upgrade Configuration

- Fully automatic loading and unloading device

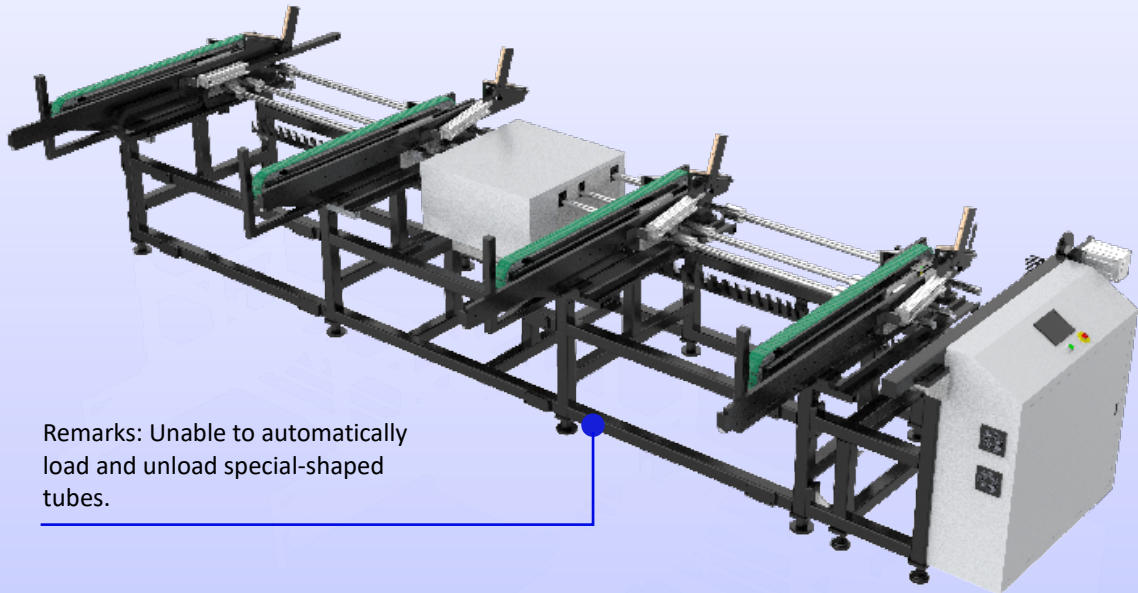


### Fully automatic loading and unloading

Feeding cycle time	≤45S
Maximum loading weight of stack	2.5T
Minimum feeding pipe length	4500MM
Maximum feeding pipe length	6500MM
Maximum tube weight	150KG
Pipe loading range	Φ20-220mm
Loading range of square tube	□20*20--150*150mm
Weight of automatic feeder	4.9T



- Semi-automatic loading and unloading device



Remarks: Unable to automatically load and unload special-shaped tubes.

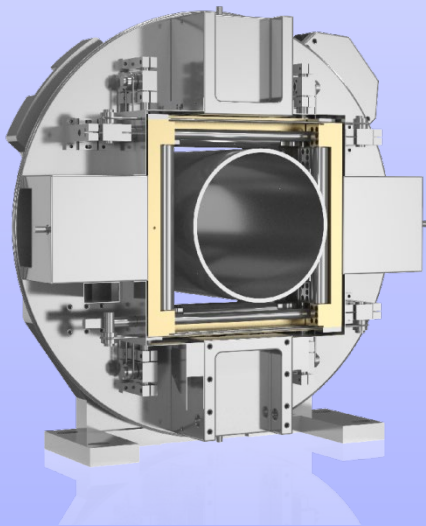
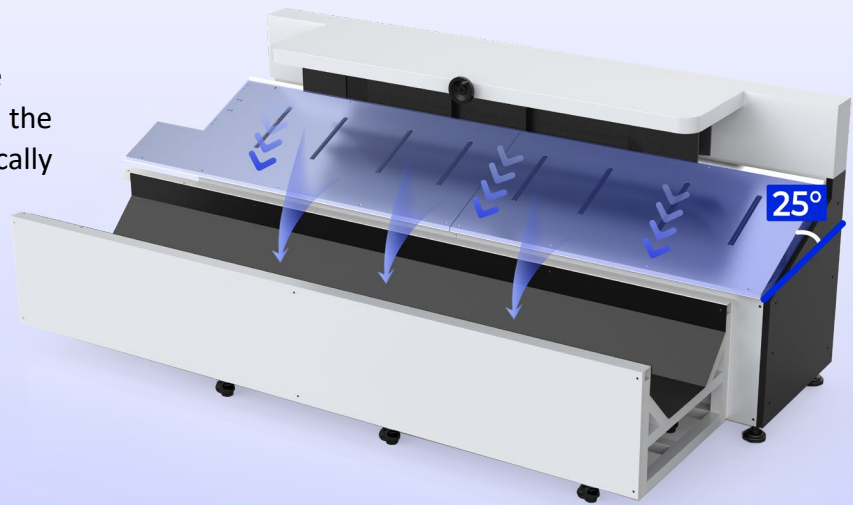
<b>Semi automatic loading and unloading</b>	
<b>Feeding cycle time</b>	<b>≤45S</b>
<b>Maximum loading weight of stack</b>	<b>2T</b>
<b>Minimum feeding pipe length</b>	<b>4500MM</b>
<b>Maximum feeding pipe length</b>	<b>6500MM</b>
<b>Maximum tube weight</b>	<b>500KG</b>
<b>Pipe loading range</b>	<b>Φ20-220mm</b>
<b>Loading range of square tube</b>	<b>□20*20--250*250mm</b>
<b>Weight of semi-automatic feeder</b>	<b>2.42T</b>



## ▶▶ PRODUCT ADVANTAGES

### ▼ Unloading Rack

- The inclination angle of the unloading rack is  $25^{\circ}$ , and the cut materials will automatically fall into the finished product collection box.

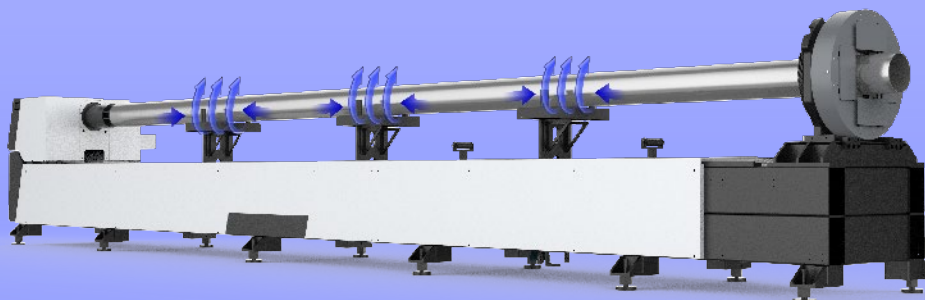


### ▼ Large Bearing Capacity

- The chuck has a wide clamping range and a large bearing capacity. Equipped with 240 specification pneumatic square chuck, the maximum bearing capacity is 300KG.

### ▼ Higher Accuracy For Slender Tube

- The follow-up support module adopts up and down + left and right directions to support the pipe at the same time, so that the slender pipe is clamped more firmly





## ▶▶ MAIN CONFIGURATION



### ▼ RAYCUS Laser Source

- High Electro-optic Conversion Efficiency
- High reliability, long service life
- Maintenance-free Operation



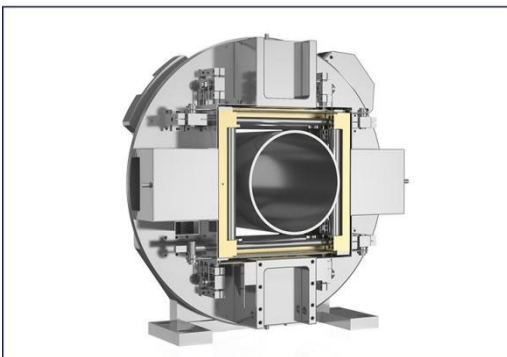
### ▼ BM1100112

- Auto-focus
- Protect modules for calibration and focus lens
- Drawer-type of lens mount, quick and easy use



### ▼ Fractional Automatic Support Installation

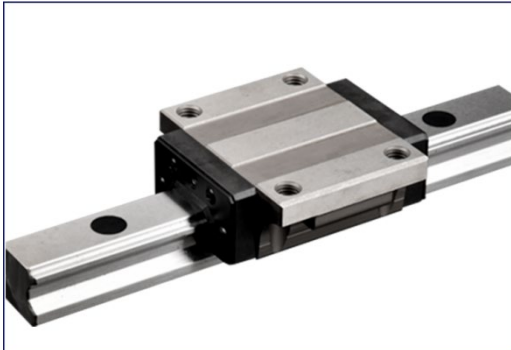
- It employs intelligent tube support design, which can solve the deformation problems in the process of long tube cutting.



### ▼ Clamp Design

- It adopts an pneumatic clamp design on both sides and it can modulate the center automatically. The diagonal adjustable range is  
round pipe: 20-240mm.  
square pipe: 20-240mm.  
H steel: #10-#22

## ▶▶ MAIN CONFIGURATION



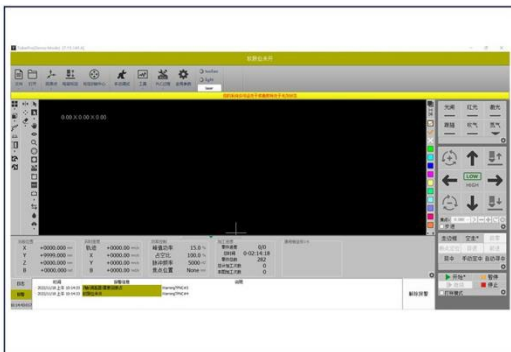
### ▼ Square Rail- Lapping

- High precision
- Accurate instantaneous transmission ratio
- High transmission efficiency;
- Long life



### ▼ Servo Motor-Inovance

- High accuracy
- High-speed performance
- High adaptability & stability
- Timeliness, short dynamic response time of motor



### ▼ CYPCUT 5000B

- Easy to use
- Various file editing functions
- Support remote control
- Real-time alarm and protection



### ▼ Han Li Water Chiller

- Machine protection
- large cooling capacity
- Stable performance



# SAMPLESv

